

## Course Evaluations Completion Data: Fall 2010 – Spring 2015

### General Findings

- Our average course evaluations completion rate for the last five years is 23.43%. The completion rate for just the last two years, however, jumps up to 28.23%. This is due to a wide variety of marketing campaigns attempted, including emails, posters, buttons, and stickers, in addition to a stronger push from the administration.
- Over the last 5 years, the collegiate unit with the highest average completion rate (27.81%) is the School of Business & Graduate Studies (BGS). The lowest completion rate is 19.05% in the School of Professional Studies (SPS). If you narrow the data to the last two years, the College of Arts & Sciences (CAS) has the highest average completion rate at 31.75%. The collegiate unit with the lowest completion rate remains SPS at 20.53%.
- The academic session with the highest average completion (24.92%) over the last five years is DAY, which consists mostly of CAS courses, with a small percentage of School of Nursing & Health Professions (NHP) courses. The lowest average completion rate is the MONTHLY academic session, which, for this time period, consists entirely of courses in the Educational Administration program in the School of Education (EDU).
- The highest completion rate average for all academic sessions was 56.05% for FALL 2014 TERM1 courses. This is due to administrative staff members attending each course to administer a 15-minute block of time for the students to complete the course evaluations during class time.
- While there is not necessarily a remarkable difference in the completion rates as related to student status (Undergraduate, 23.70% vs. Graduate, 22.12%), there is a noticeable difference between the average completion rates as related to faculty status. Full-time faculty and instructional staff had a five-year average of 25.94% in comparison to courses staffed by adjunct faculty members, where the completion rate was 21.18%. This can be tied to both to the use of evaluation results in full-time faculty member & instructional staff promotion portfolios, as well as a greater turnover rate of adjunct faculty members.

Year/Term	Group	No. of students	No. of completed evals	Percentage Completed
2015 SPRING	All Students	6,526	1,809	27.72%
2014 FALL	All Students	7,348	2,454	33.40%
2014 SPRING	All Students	7,218	1,686	23.36%
2013 FALL	All Students	8,076	2,297	28.44%
2013 SPRING	All Students	7,885	1,774	22.50%
2012 FALL	All Students	8,576	2,082	24.28%
2012 SPRING	All Students	8,125	1,796	22.10%
2011 FALL	All Students	8,264	1,453	17.58%
2011 SPRING	All Students	7,108	1,464	20.60%
2010 FALL	All Students	7,289	1,043	14.31%
			<b>Average:</b>	<b>23.43%</b>

**Course Evaluations Completion Data: Fall 2010 – Spring 2015**

<b>Collegiate Unit:</b>	<b>BGS</b>	<b>CAS</b>	<b>EDU</b>	<b>NHP</b>	<b>SPS</b>
2015 SPRING	22.99%	33.12%	22.39%	19.71%	16.79%
2014 FALL	43.88%	36.38%	25.34%	34.31%	23.42%
2014 SPRING	23.70%	25.39%	28.16%	17.75%	18.30%
2013 FALL	20.67%	32.09%	28.87%	25.68%	23.61%
2013 SPRING		23.45%	25.75%	26.56%	17.76%
2012 FALL		30.75%	19.62%	18.47%	17.06%
2012 SPRING		27.60%	24.92%		12.41%
2011 FALL		15.33%	26.03%		17.75%
2011 SPRING		18.14%	19.64%		24.69%
2010 FALL		10.15%	19.64%		18.68%
<b>Average:</b>	<b>27.81%</b>	<b>25.24%</b>	<b>24.04%</b>	<b>23.75%</b>	<b>19.05%</b>

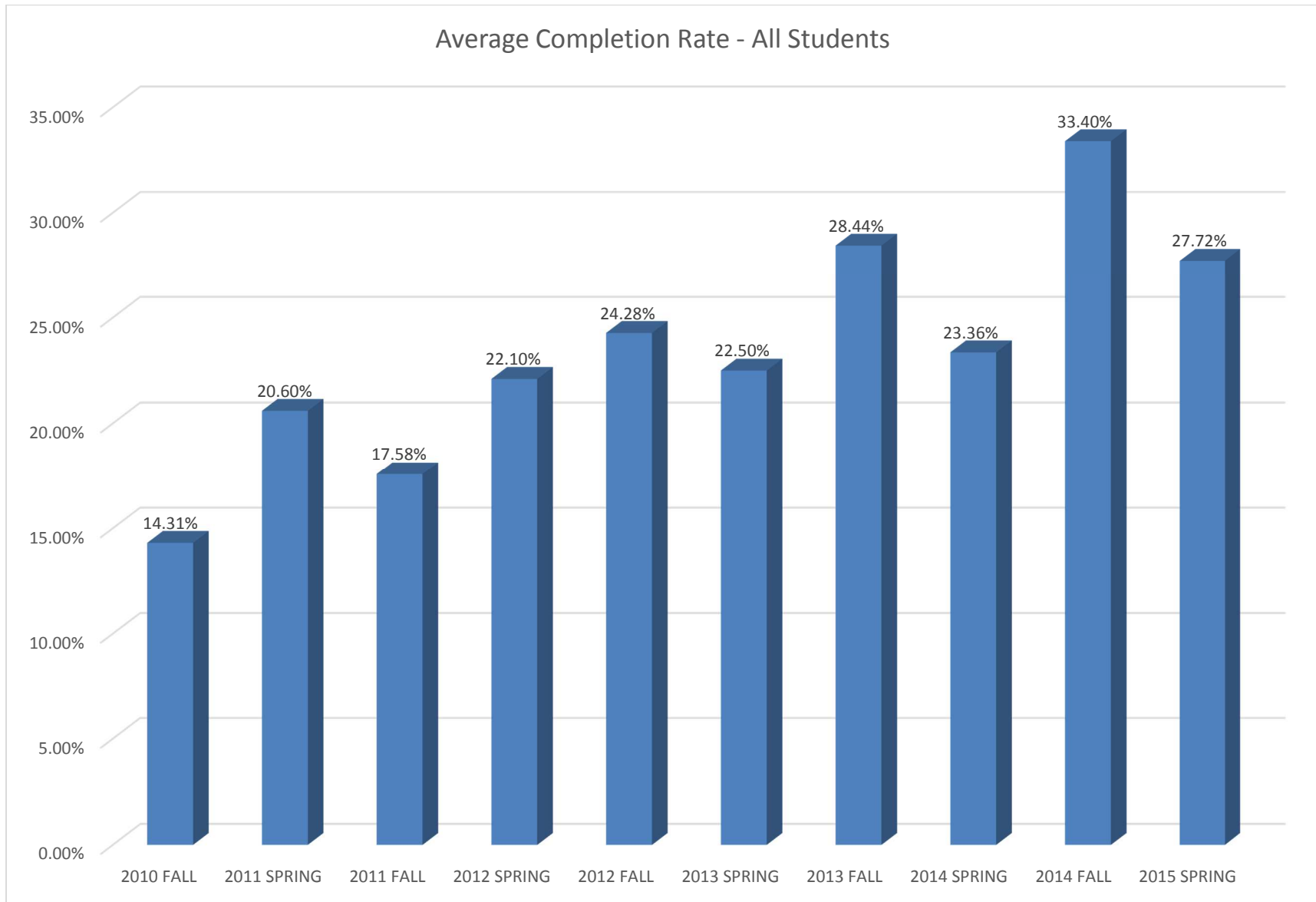
<b>Academic Session:</b>	<b>DAY</b>	<b>MONTHLY</b>	<b>TERM1</b>	<b>TERM2</b>	<b>WEEKLY</b>
2015 SPRING	33.12%	10.34%	19.03%	15.83%	21.11%
2014 FALL	36.63%	38.24%	56.05%	18.64%	22.98%
2014 SPRING	24.43%	22.50%	19.74%	24.74%	21.63%
2013 FALL	31.34%	16.47%	18.48%	20.13%	28.25%
2013 SPRING	23.05%	14.86%	11.09%	18.30%	26.30%
2012 FALL	29.20%	4.10%	14.53%	12.97%	22.49%
2012 SPRING	27.60%	13.00%	12.32%	10.54%	17.98%
2011 FALL	15.55%	19.17%	19.43%	15.28%	21.80%
2011 SPRING	18.14%	13.37%	15.09%	20.86%	28.45%
2010 FALL	10.14%	8.16%	23.88%	18.52%	20.01%
<b>Average:</b>	<b>24.92%</b>	<b>16.02%</b>	<b>20.96%</b>	<b>17.58%</b>	<b>23.10%</b>

<b>Faculty Status:</b>	<b>FT Faculty &amp; Instr. Staff</b>	<b>PT Faculty</b>
2015 SPRING	31.72%	23.79%
2014 FALL	37.82%	29.82%
2014 SPRING	25.62%	21.00%
2013 FALL	33.62%	24.15%
2013 SPRING	24.83%	20.28%
2012 FALL	29.36%	19.71%
2012 SPRING	26.79%	18.20%
2011 FALL	16.38%	18.60%
2011 SPRING	21.44%	19.89%
2010 FALL	11.83%	16.33%
<b>Average:</b>	<b>25.94%</b>	<b>21.18%</b>

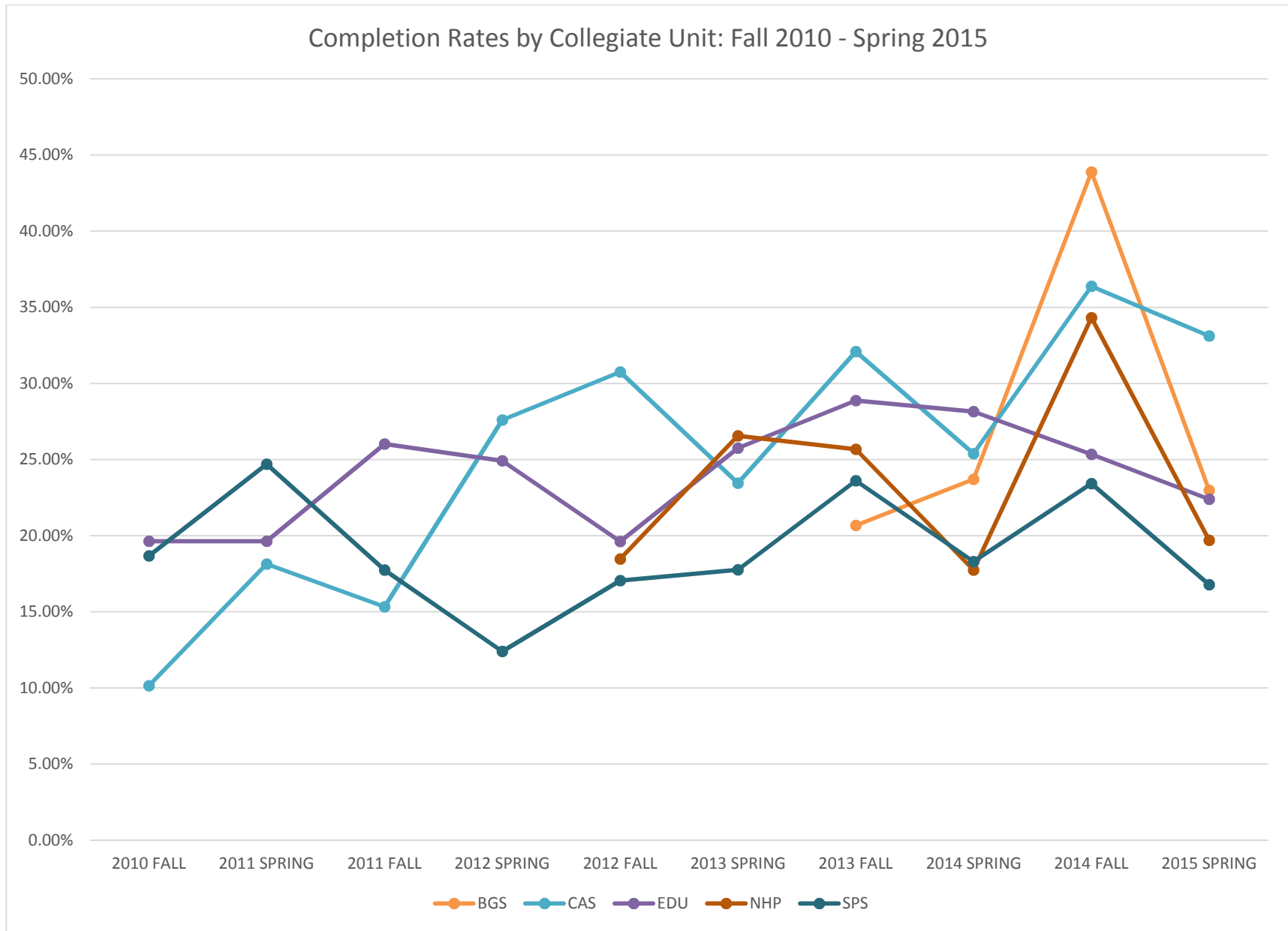
<b>Student Status:</b>	<b>Undergraduate</b>	<b>Graduate</b>
2015 SPRING	28.66%	22.64%
2014 FALL	33.55%	32.62%
2014 SPRING	22.77%	26.12%
2013 FALL	29.18%	24.40%
2013 SPRING	22.54%	22.34%
2012 FALL	26.09%	17.40%
2012 SPRING	23.22%	17.95%
2011 FALL	16.78%	20.57%
2011 SPRING	21.18%	18.63%
2010 FALL	13.01%	18.56%
<b>Average:</b>	<b>23.70%</b>	<b>22.12%</b>

Data broken down by each individual academic year/term follows the overview graphs, starting with the most recent SPRING 2015.

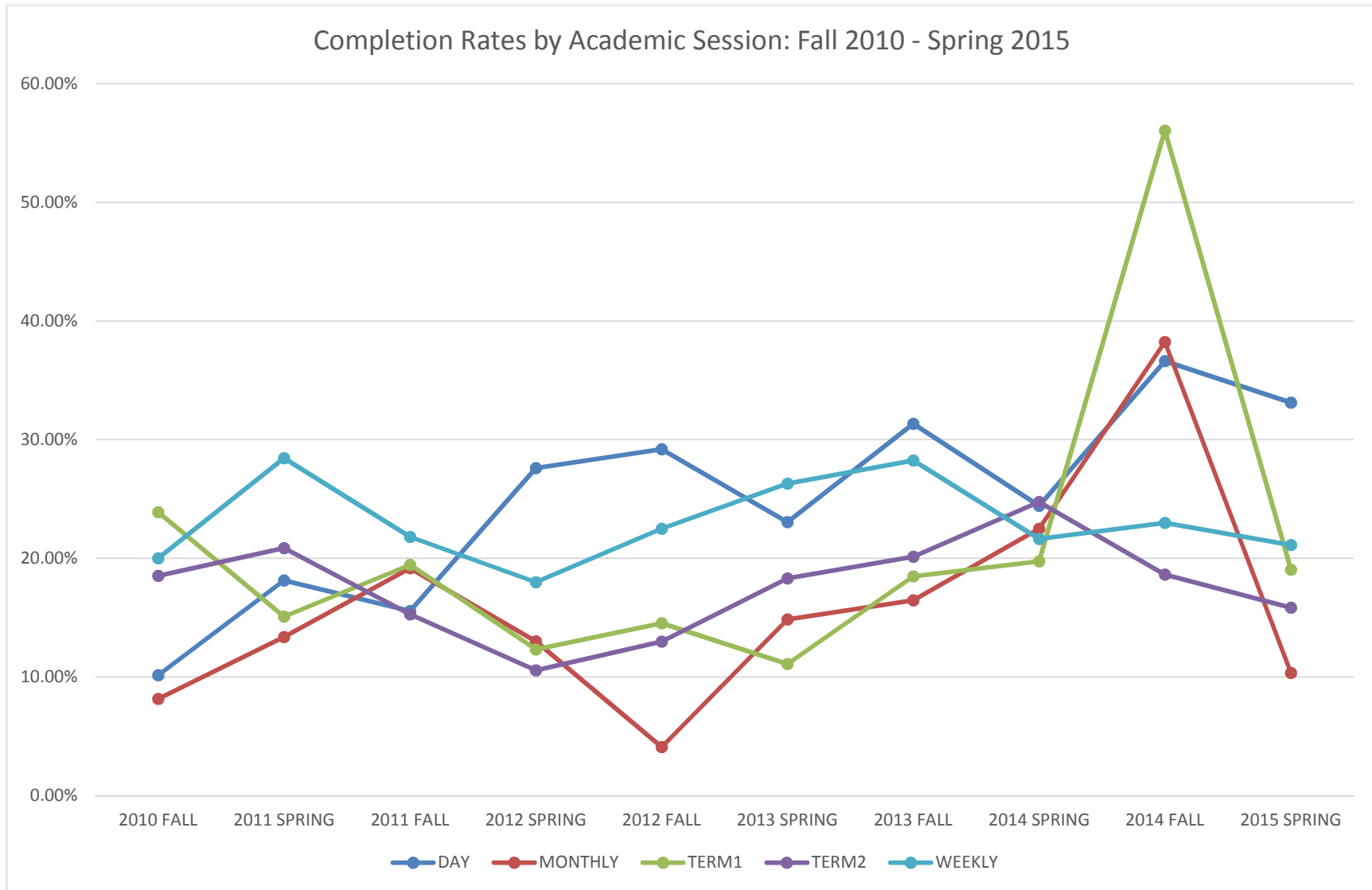
## Course Evaluations Completion Data: Fall 2010 – Spring 2015



### Course Evaluations Completion Data: Fall 2010 – Spring 2015

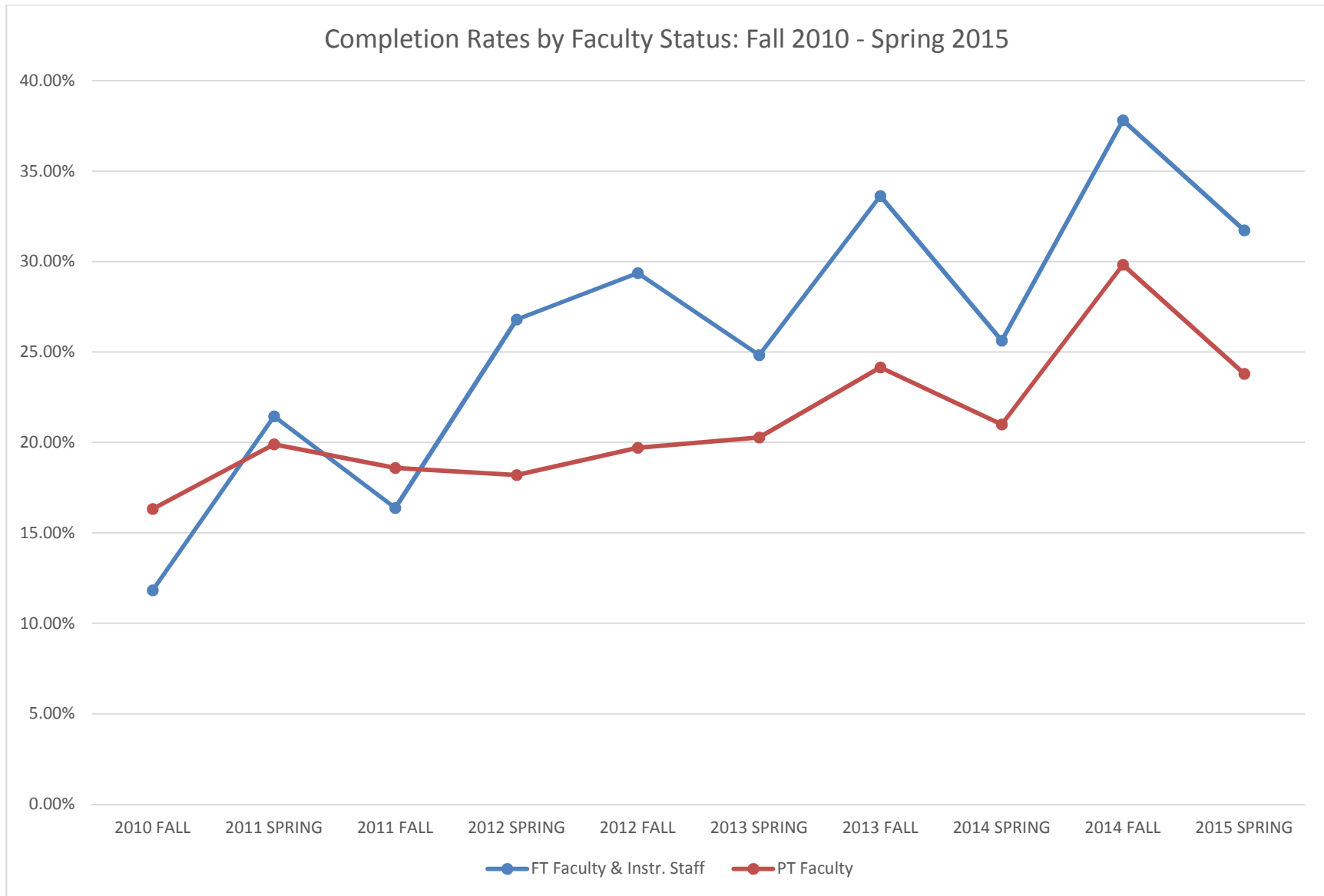


## Course Evaluations Completion Data: Fall 2010 – Spring 2015

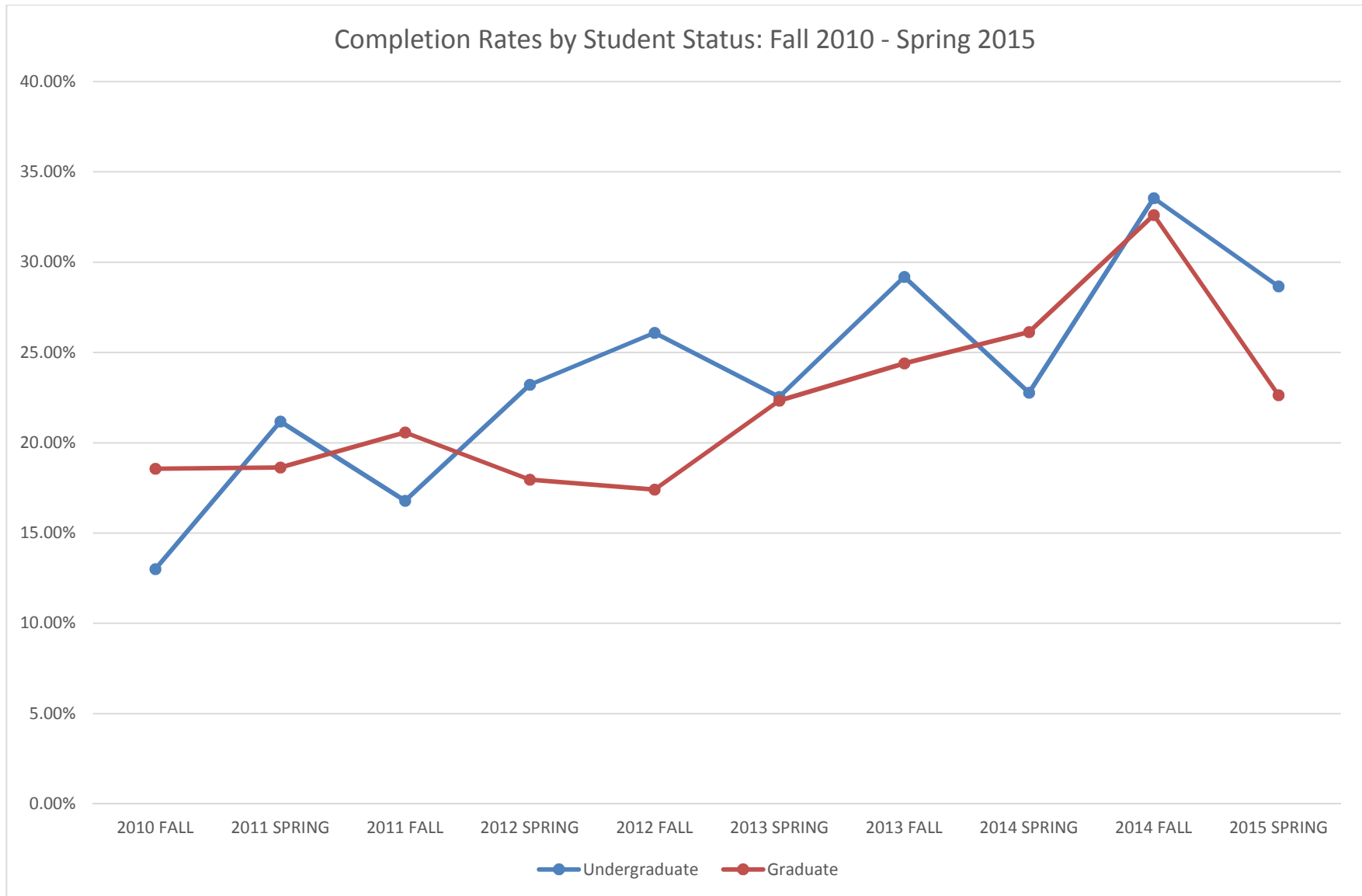


*NOTE: The high spike for Fall 2014 TERM1 courses was due to administrative staff members attending each course to administer a 15-minute block of time for the students to complete the course evaluations.*

### Course Evaluations Completion Data: Fall 2010 – Spring 2015



### Course Evaluations Completion Data: Fall 2010 – Spring 2015

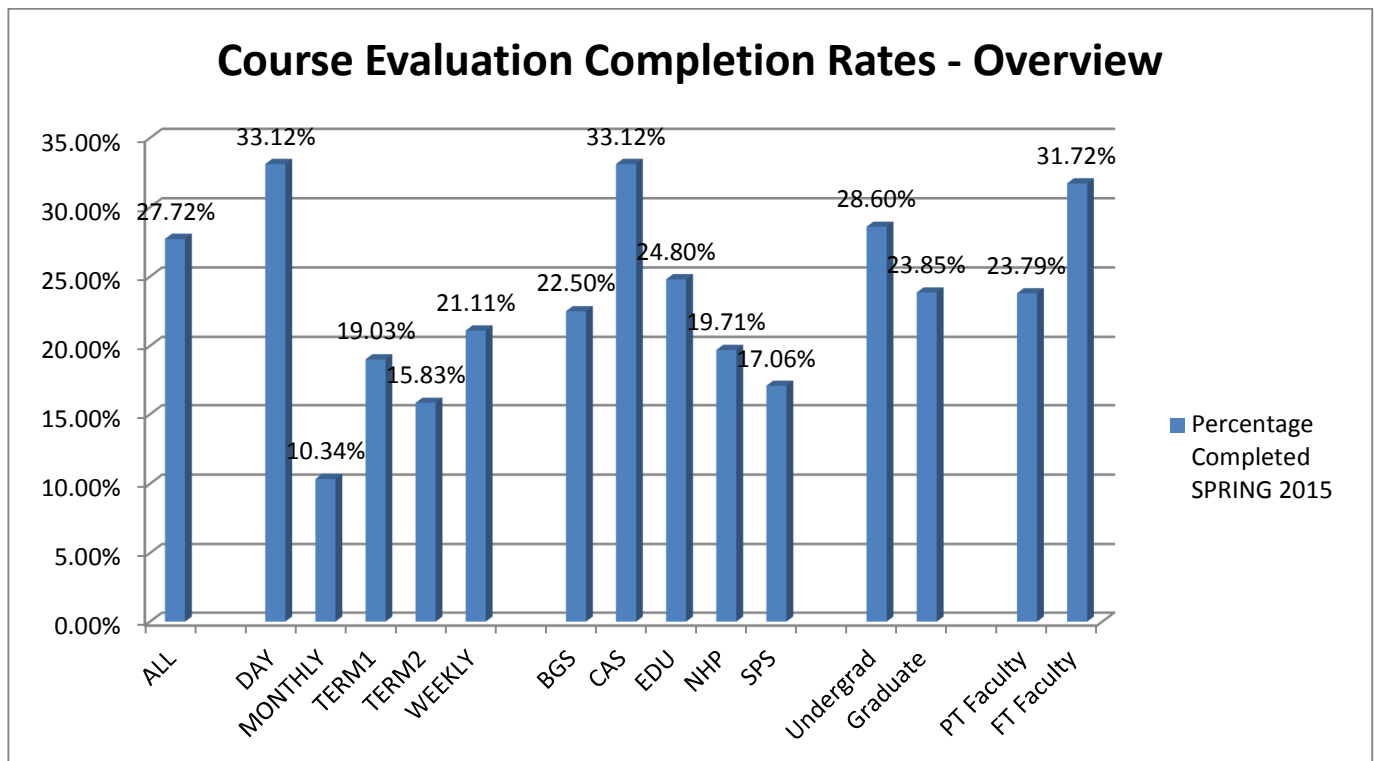


## Course Evaluations Completion Data: Fall 2010 – Spring 2015

Spring 2015 – Most Recent

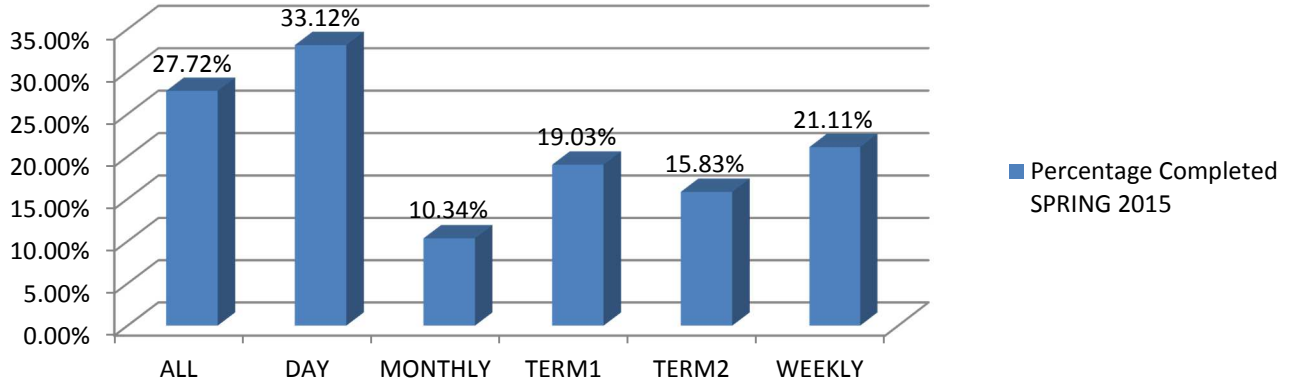
Group – Spring 2015	No. of students	No. of completed evals	Percentage Completed
ALL	6,526	1,809	27.72%
DAY	3,943	1,306	33.12%
MONTHLY	87	9	10.34%
TERM1	473	90	19.03%
TERM2	436	69	15.83%
WEEKLY	1,587	335	21.11%
BGS	422	97	22.99%
CAS	3,943	1,306	33.12%
EDU	594	133	22.39%
NHP	340	67	19.71%
SPS	1,227	206	16.79%
Undergraduate	5,567	1,592	28.60%
Graduate	872	208	23.85%
PT Faculty	3,295	784	23.79%
FT Faculty & Instr. Staff	3,231	1,025	31.72%

*Please Note: This data was adjusted to remove internships, independent studies, and practicums.*

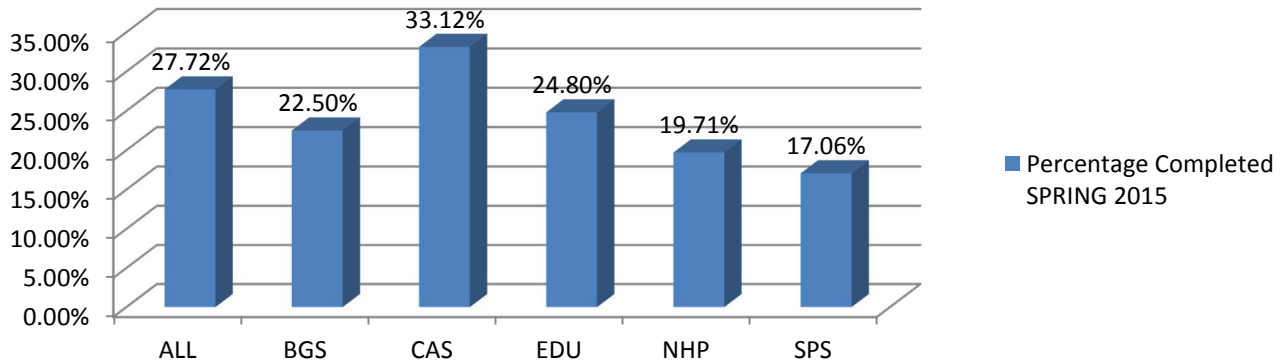




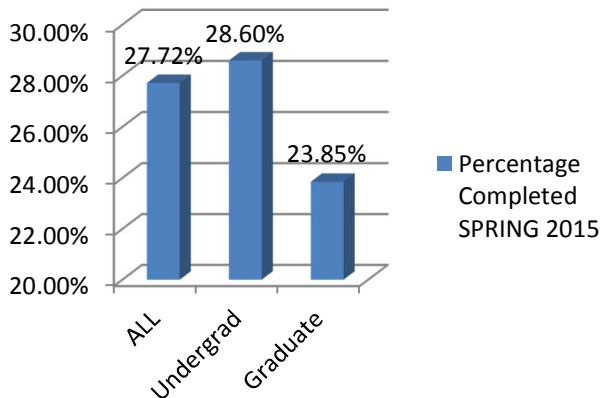
### Course Evaluation Completion Rates by Academic Session



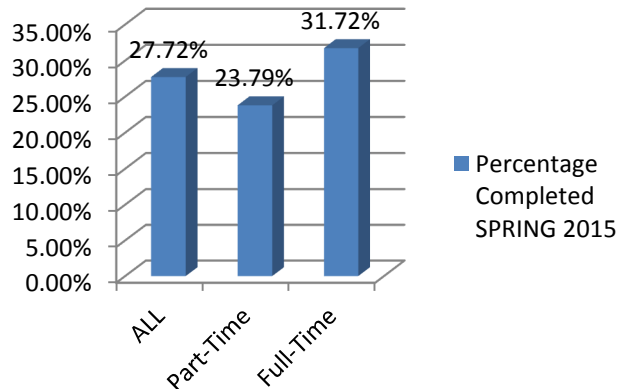
### Course Evaluation Completion Rates by Collegiate Unit



### Course Evaluation Completion Rates by Student Status



### Course Evaluation Completion Rate by Faculty Status



Group – Fall 2014	No. of students	No. of completed evals	Percentage Completed
ALL	7,348	2,454	33.40%
DAY	4,652	1,704	36.63%
MONTHLY	102	39	38.24%
TERM1	405	227	56.05%
TERM2	440	82	18.64%
WEEKLY	1,749	402	22.98%
BGS	474	208	43.88%
CAS	4,313	1,569	36.38%
EDU	734	186	25.34%
NHP	580	199	34.31%
SPS	1,247	292	23.42%
Undergraduate	6,140	2,060	33.55%
Graduate	1,208	394	32.62%
PT Faculty	4,064	1,212	29.82%
FT Faculty & Instr. Staff	3,284	1,242	37.82%

*Please Note: This data was adjusted to remove internships, independent studies, and practicums.*

*Data continued on next page.*

Group - Spring 2014	No. of students	No. of completed evals	Percentage Completed
ALL	7,218	1,686	23.36%
DAY	4,237	1,035	24.43%
MONTHLY	160	36	22.50%
TERM1	532	105	19.74%
TERM2	477	118	24.74%
WEEKLY	1,812	392	21.63%
BGS	578	137	23.70%
CAS	3,817	969	25.39%
EDU	689	194	28.16%
NHP	828	147	17.75%
SPS	1,306	239	18.30%
Undergraduate	5,951	1,355	22.77%
Graduate	1,267	331	26.12%
PT Faculty	3,534	742	21.00%
FT Faculty & Instr. Staff	3,684	944	25.62%

Please Note: This data was adjusted to remove undergraduate internships, independent studies, directed research, fieldwork, and other courses with differing evaluation circumstances.

Group - Fall 2013	No. of students	No. of completed evals	Percentage Completed
ALL	8,076	2,297	28.44%
DAY	4,808	1,507	31.34%
MONTHLY	249	41	16.47%
TERM1	552	102	18.48%
TERM2	616	124	20.13%
WEEKLY	1,851	523	28.25%
CAS	4,250	1,364	32.09%
EDU	568	164	28.87%
NHP	962	247	25.68%
SPS (with BGS courses)*	2,296	522	22.74%
BGS	682	141	20.67%
SPS	1,614	381	23.61%
Undergraduate	6,826	1,992	29.18%
Graduate	1,250	305	24.40%
PT Faculty	4,418	1,067	24.15%
FT Faculty & Instr. Staff	3,658	1,230	33.62%

Please Note: This data was adjusted to remove undergraduate internships, independent studies, directed research, fieldwork, and other courses with differing evaluation circumstances.

\*School of Business and Graduate Studies was not officially a separate entity until Fall 2014.

Group - Spring 2013	No. of students	No. of completed evals	Percentage Completed
ALL	7,885	1,774	22.50%
DAY	4,425	1,020	23.05%
MONTHLY	175	26	14.86%
TERM1	604	67	11.09%
TERM2	552	101	18.30%
WEEKLY	2,129	560	26.30%
CAS	3,889	912	23.45%
EDU	831	214	25.75%
NHP	975	259	26.56%
SPS	2,190	389	17.76%
Undergraduate	6,309	1,422	22.54%
Graduate	1,576	352	22.34%
PT Faculty	4,043	820	20.28%
FT Faculty & Instr. Staff	3,842	954	24.83%

Please Note: This data was adjusted to remove undergraduate internships, independent studies, directed research, fieldwork, and other courses with differing evaluation circumstances.

Group - Fall 2012	No. of students	No. of completed evals	Percentage Completed
ALL	8,576	2,082	24.28%
DAY	4,719	1,378	29.20%
MONTHLY	293	12	4.10%
TERM1	647	94	14.53%
TERM2	609	79	12.97%
WEEKLY	2,308	519	22.49%
CAS	4,240	1,304	30.75%
EDU	943	185	19.62%
NHP	1,007	186	18.47%
SPS	2,386	407	17.06%
Undergraduate	6,783	1,770	26.09%
Graduate	1,793	312	17.40%
PT Faculty	4,520	891	19.71%
FT Faculty & Instr. Staff	4,056	1,191	29.36%

Please Note: This data was adjusted to remove undergraduate internships, independent studies, directed research, fieldwork, and other courses with differing evaluation circumstances.

Group - Spring 2012	No. of students	No. of completed evals	Percentage Completed
ALL	8,125	1,796	22.10%
DAY	4,421	1,220	27.60%
MONTHLY	200	26	13.00%
TERM1	641	79	12.32%
TERM2	588	62	10.54%
WEEKLY	2,275	409	17.98%
CAS	4,421	1,220	27.60%
EDU	931	232	24.92%
SPS	2,773	344	12.41%
Undergraduate	6,404	1,487	23.22%
Graduate	1,721	309	17.95%
PT Faculty	4,434	807	18.20%
FT Faculty & Instr. Staff	3,691	989	26.79%

*Please Note: This data was adjusted to remove undergraduate internships, independent studies, directed research, fieldwork, and other courses with differing evaluation circumstances.*

Group - Fall 2011	No. of students	No. of completed evals	Percentage Completed
ALL	8,264	1,453	17.58%
DAY	4,592	714	15.55%
MONTHLY	339	65	19.17%
TERM1	530	103	19.43%
TERM2	615	94	15.28%
WEEKLY	2,188	477	21.80%
CAS	4,285	657	15.33%
EDU	995	259	26.03%
NHP	747	140	18.74%
SPS	2,237	397	17.75%
Undergraduate	6,524	1,095	16.78%
Graduate	1,740	358	20.57%
PT Faculty	4,485	834	18.60%
FT Faculty & Instr. Staff	3,779	619	16.38%

*Please Note: This data was adjusted to remove undergraduate internships, independent studies, directed research, fieldwork, and other courses with differing evaluation circumstances.*

Group - Spring 2011	No. of students	No. of completed evals	Percentage Completed
ALL	7,108	1,464	20.60%
DAY	3,749	680	18.14%
MONTHLY	359	48	13.37%
TERM1	550	83	15.09%
TERM2	580	121	20.86%
WEEKLY	1,870	532	28.45%
CAS	3,749	680	18.14%
EDU	901	177	19.64%
SPS	2,458	607	24.69%
Undergraduate	5,476	1,160	21.18%
Graduate	1,632	304	18.63%
PT Faculty	3,881	772	19.89%
FT Faculty & Instr. Staff	3,227	692	21.44%

*Please Note: This data was adjusted to remove undergraduate internships, independent studies, directed research, fieldwork, and other courses with differing evaluation circumstances.*

Group - Fall 2010	No. of students	No. of completed evals	Percentage Completed
ALL	7,289	1,043	14.31%
DAY	3,846	390	10.14%
MONTHLY	429	35	8.16%
TERM1	649	155	23.88%
TERM2	691	128	18.52%
WEEKLY	1,674	335	20.01%
CAS	3,844	390	10.15%
EDU	988	194	19.64%
SPS	2,457	459	18.68%
Undergraduate	5,581	726	13.01%
Graduate	1,708	317	18.56%
PT Faculty	4,018	656	16.33%
FT Faculty & Instr. Staff	3,271	387	11.83%

*Please Note: This data was adjusted to remove undergraduate internships, independent studies, directed research, fieldwork, and other courses with differing evaluation circumstances.*