



The Trinity Academic Center



The Trinity Academic Center

Trinity Washington University is undertaking the development of the first new academic building on campus in more than 50 years. Addressing longstanding needs for modern instructional environments, the new Trinity Academic Center provides 12 state-of-the-art science and nursing laboratories, and 23 modern classrooms and seminar spaces to ensure Trinity's academic quality, versatility and competitiveness far into the future.

Site plan opposite page: located opposite the south hall of Main Hall and alongside the library, the Academic Center will replace the existing science building. New roads will facilitate improved campus traffic circulation and existing parking spaces will relocate to new parking areas.

Key Features:

80,000 square feet, LEED Certified

8 science laboratories for introductory and advanced sciences

**4 Nursing and Health Assessment laboratories and instructional spaces;
and Nursing Simulation Labs**

Shared simulation and practice spaces for Health Professions, Counseling and Psychology

\$40 million total project cost



MICHIGAN AVENUE

MAIN HALL

ALUMNAE HALL

TRINITY
SPORTS
CENTER

LIBRARY

FRANKLIN STREET

TRINITY ACADEMIC CENTER

The Trinity Academic Center

View shows the Academic Center from Franklin Street looking north toward Main Hall.

This view shows the face of the building along Franklin Street with the large tiered classrooms on the first floor extending out from the building.



The Trinity Academic Center

First Floor plan:

Students, faculty, staff and visitors will enter through a lovely semi-circular vestibule into a central gathering space with lounges and an information desk.

Elevators and an open staircase are in the center of the building.

Two large tiered classrooms accommodating 72 students each are immediately in the center of the building on the Franklin Street side.

Classrooms also appear on each side of the main lobby/lounge area.

The Information Technology suite is also on the first floor allowing patrons ease of access for tech assistance. The IT suite also houses the critical hardware and software for all of Trinity's information systems.

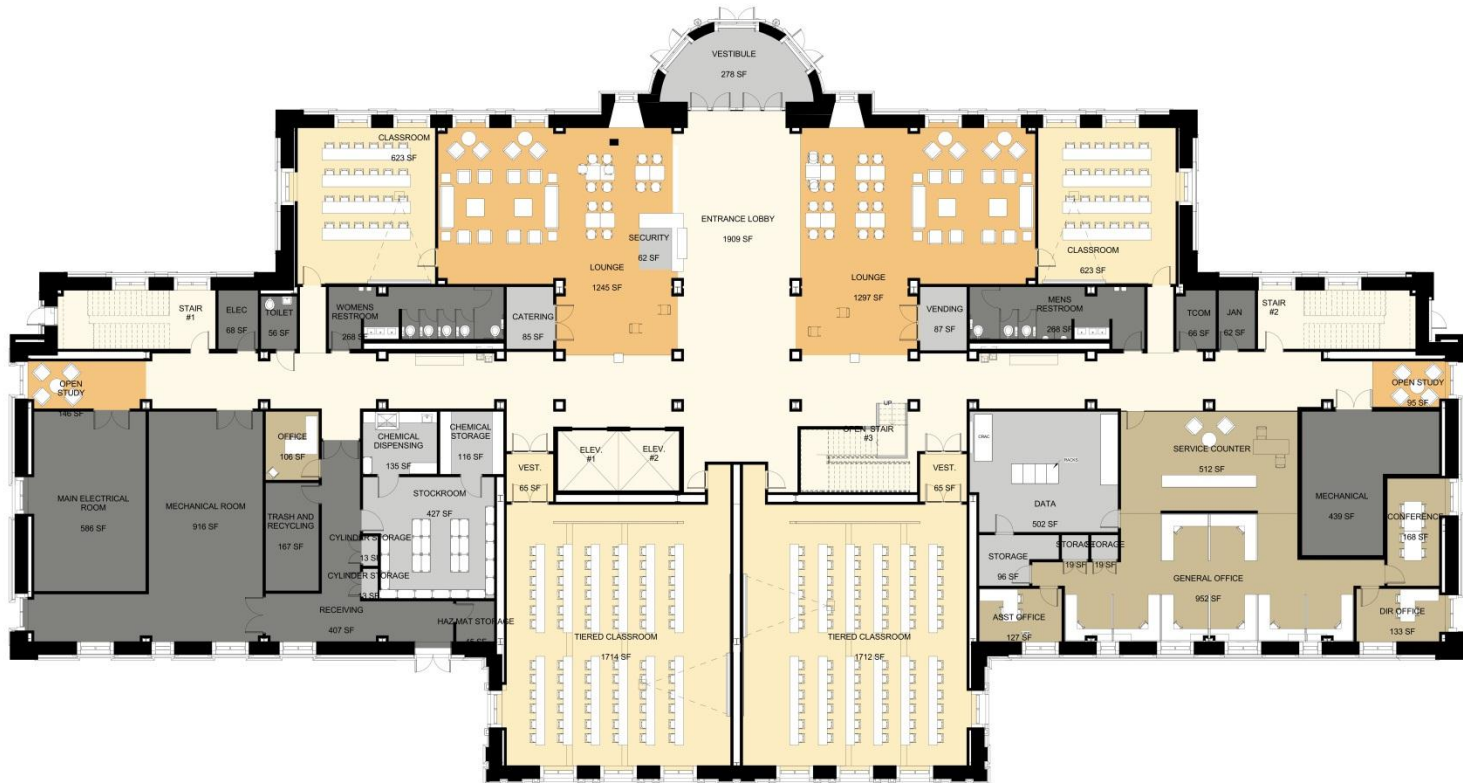
Restrooms and other service areas are along the central corridor.



First Floor Entrance Interior View Looking
Toward Entrance to Tiered Classrooms



View of First Floor Lobby Lounge Left Side





View of a Tiered Classroom



View of Upper Floor Center at
Elevator/Classroom Lobby

The Trinity Academic Center

Second Floor plan:

Nursing and Health Assessment laboratories are the major feature of the second floor plan. The Nursing labs on the lower left side of the illustration include a total of 16 hospital beds that can accommodate as many as 32 students in lab classes running simultaneously.

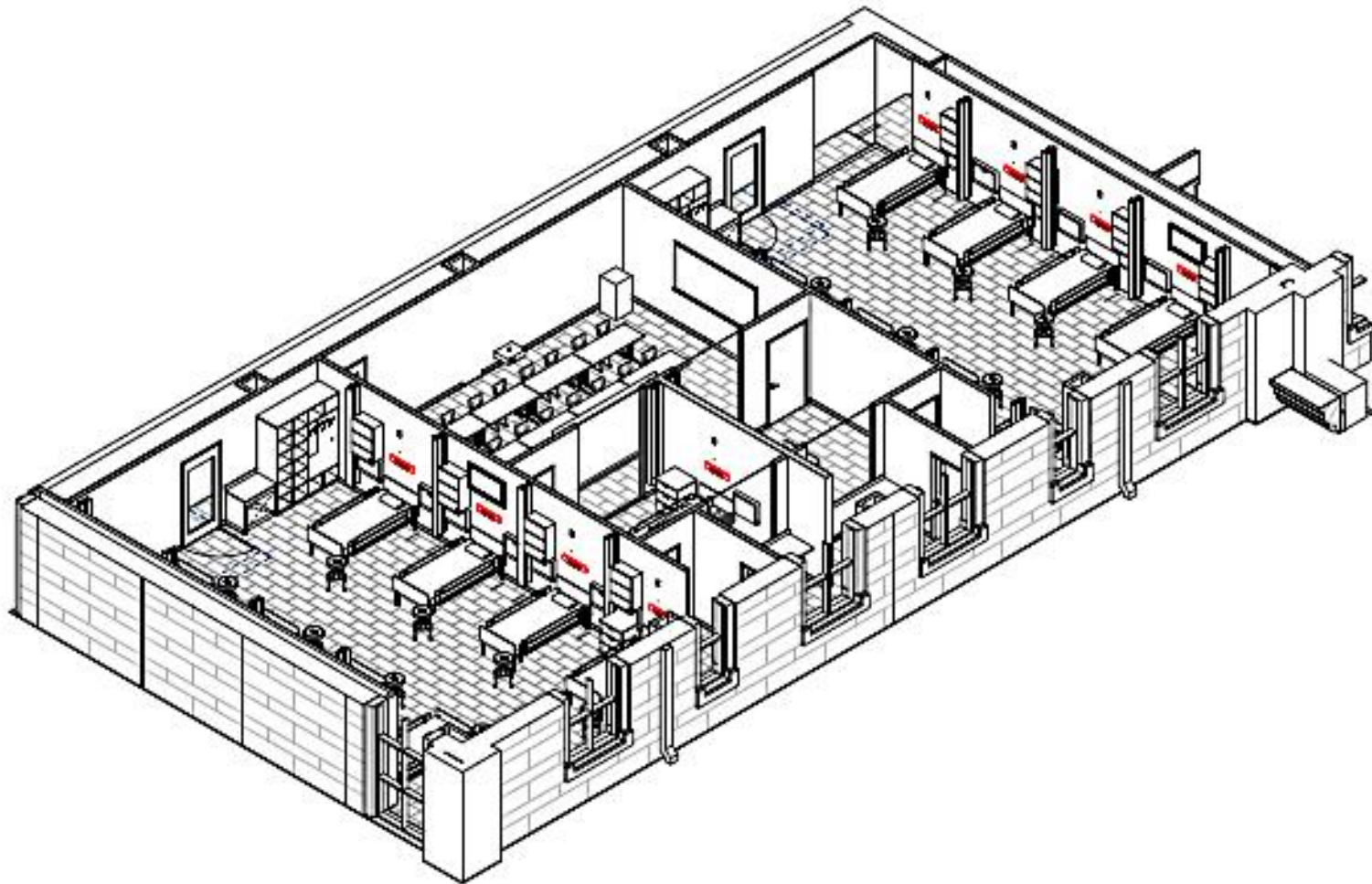
A simulation lab is located between the two Nursing labs, and the small seminar room adjacent to the simulation lab allows observation.

A faculty office suite with a small conference room is in the center.

Health Assessment and additional simulation or interview rooms are on the are on the lower right-hand side of the illustration.

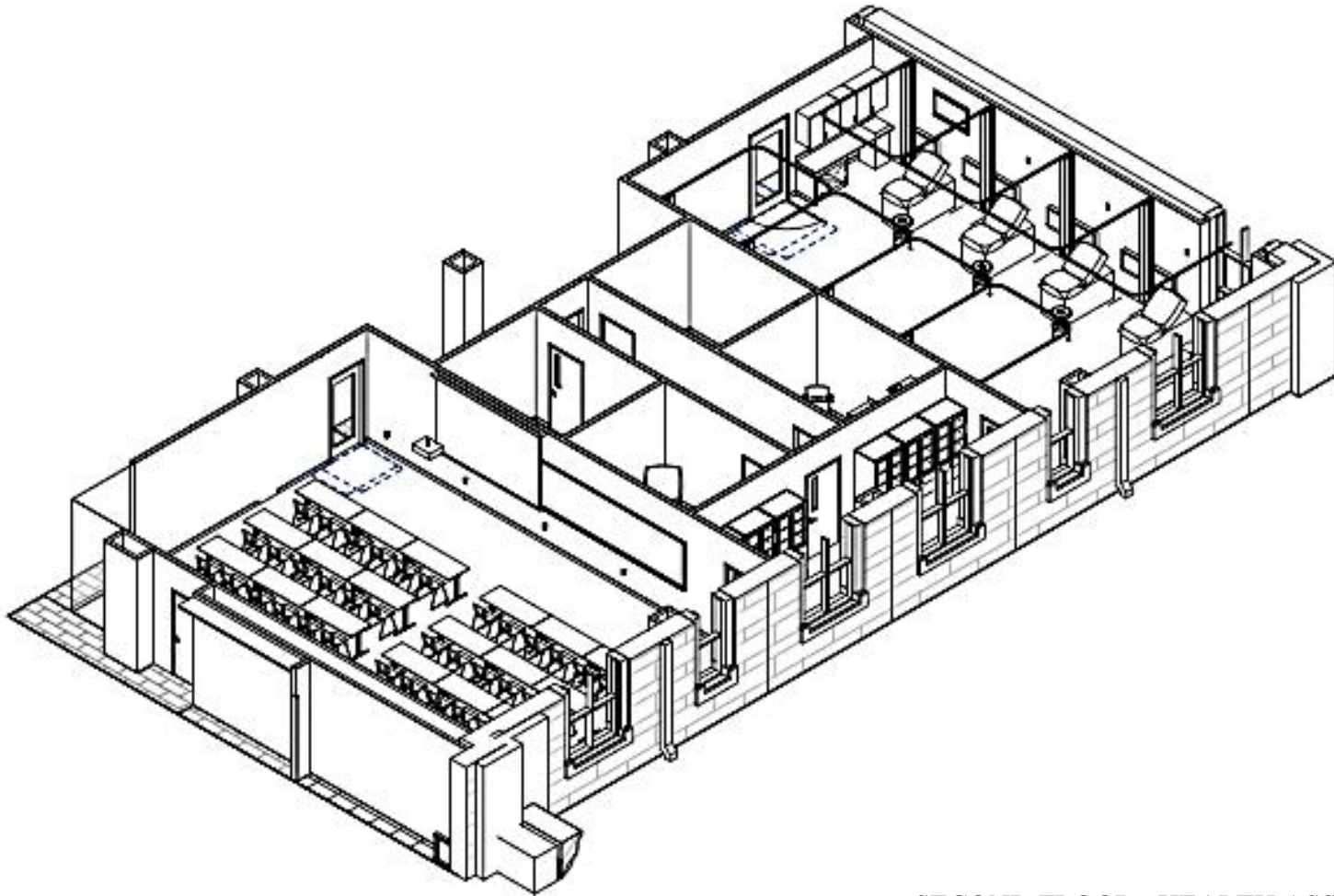
On the top side of the corridor (facing Main Hall), classrooms can accommodate 48, 36 and 24 students respectively depending on the configurations.





SECOND FLOOR: NURSING LABS





SECOND FLOOR: HEALTH ASSESSMENT
LABS AND SKILLS PRACTICE AREAS

The Trinity Academic Center

Third Floor plan:

Anatomy & Physiology, and Biology laboratories are the major feature of the third floor plan. The A&P labs on the lower left side of the illustration can accommodate 24 students at the benches.

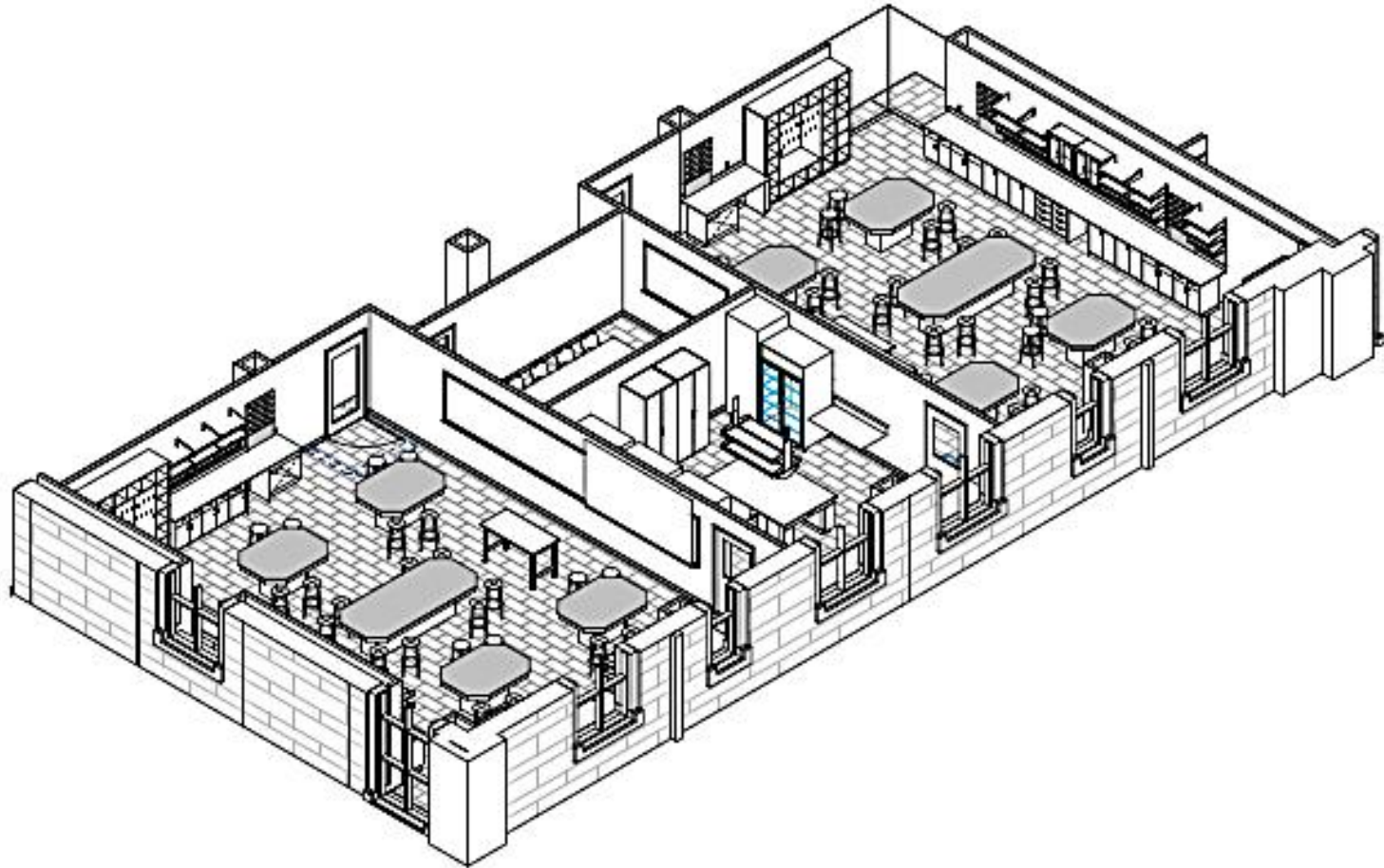
Prep and seminar spaces are located between the labs.

A faculty office suite with a small conference room is in the center.

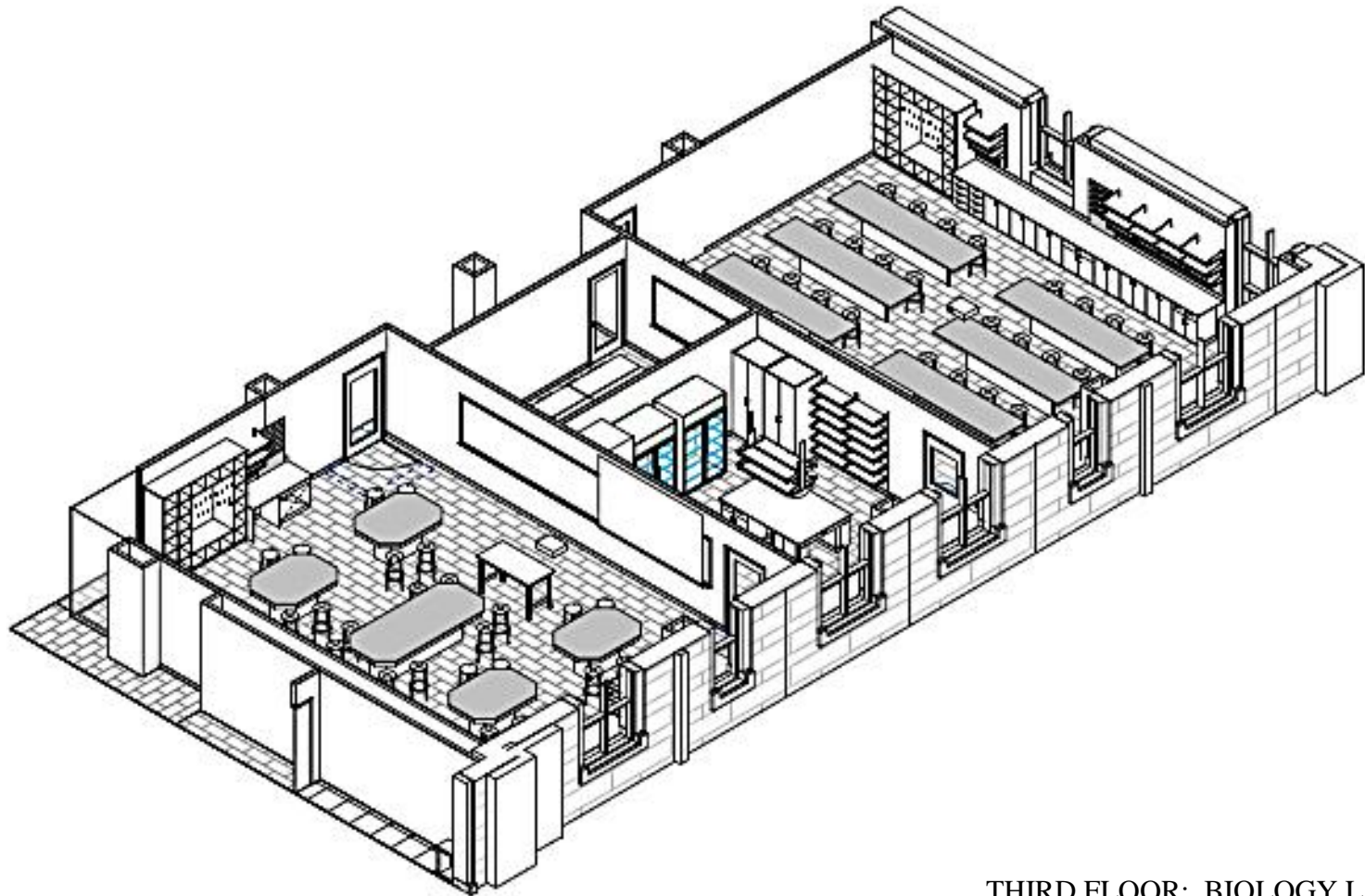
General biology and additional prep/seminar spaces are on the lower right-hand side of the illustration. One lab/classroom is available for Physics, Environmental Science, Geology and similar uses.

On the top side of the corridor (facing Main Hall), classrooms can accommodate 48, 36 and 24 students respectively depending on the configurations.





THIRD FLOOR: ANATOMY AND PHYSIOLOGY LABS



THIRD FLOOR: BIOLOGY LABS

The Trinity Academic Center

Fourth Floor plan:

Advanced Science laboratories are the major feature of the fourth floor plan.

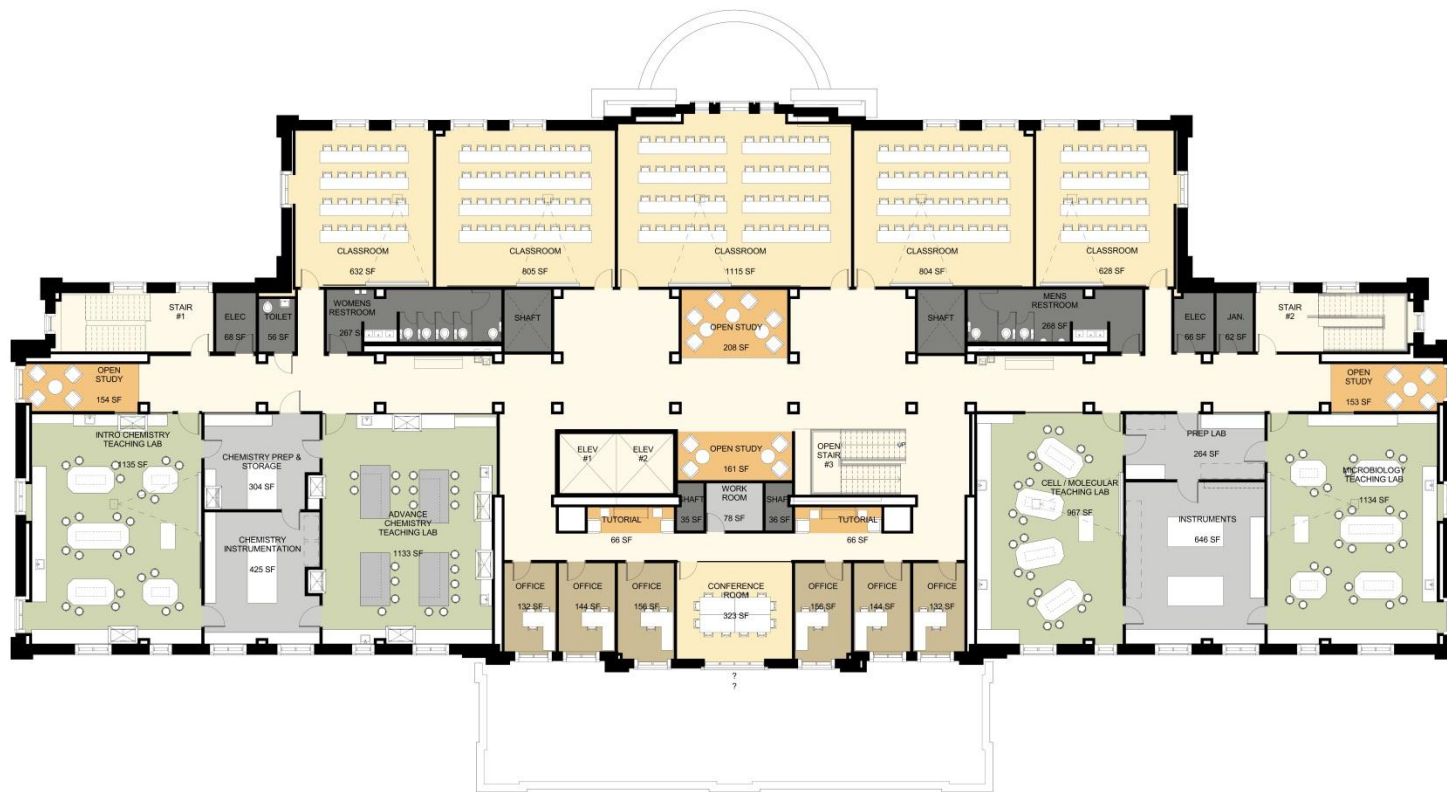
General and Advanced Chemistry labs on the lower left side of the illustration can accommodate 24 students at the benches.

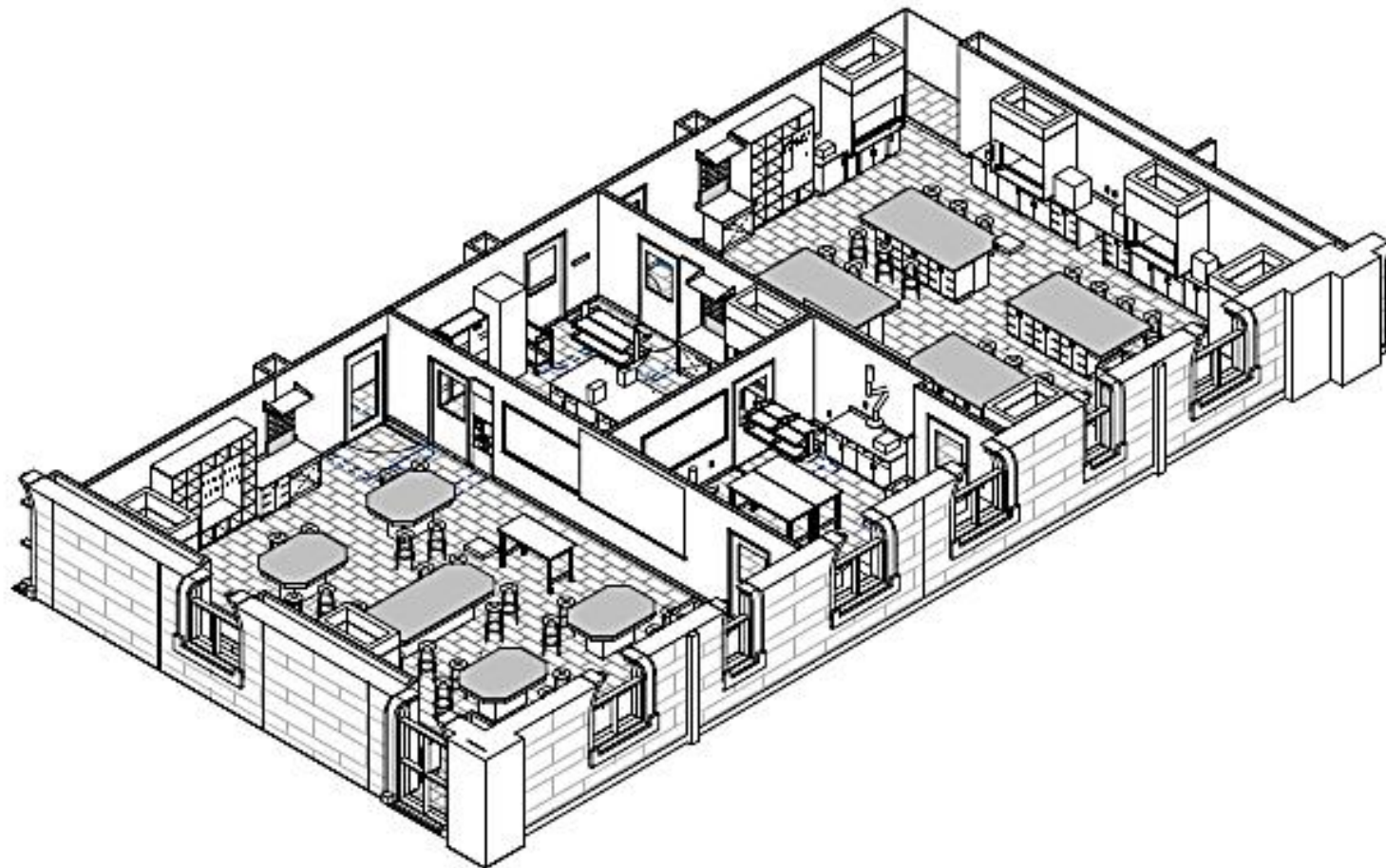
Prep and seminar spaces are located between the labs.

A faculty office suite with a small conference room is in the center.

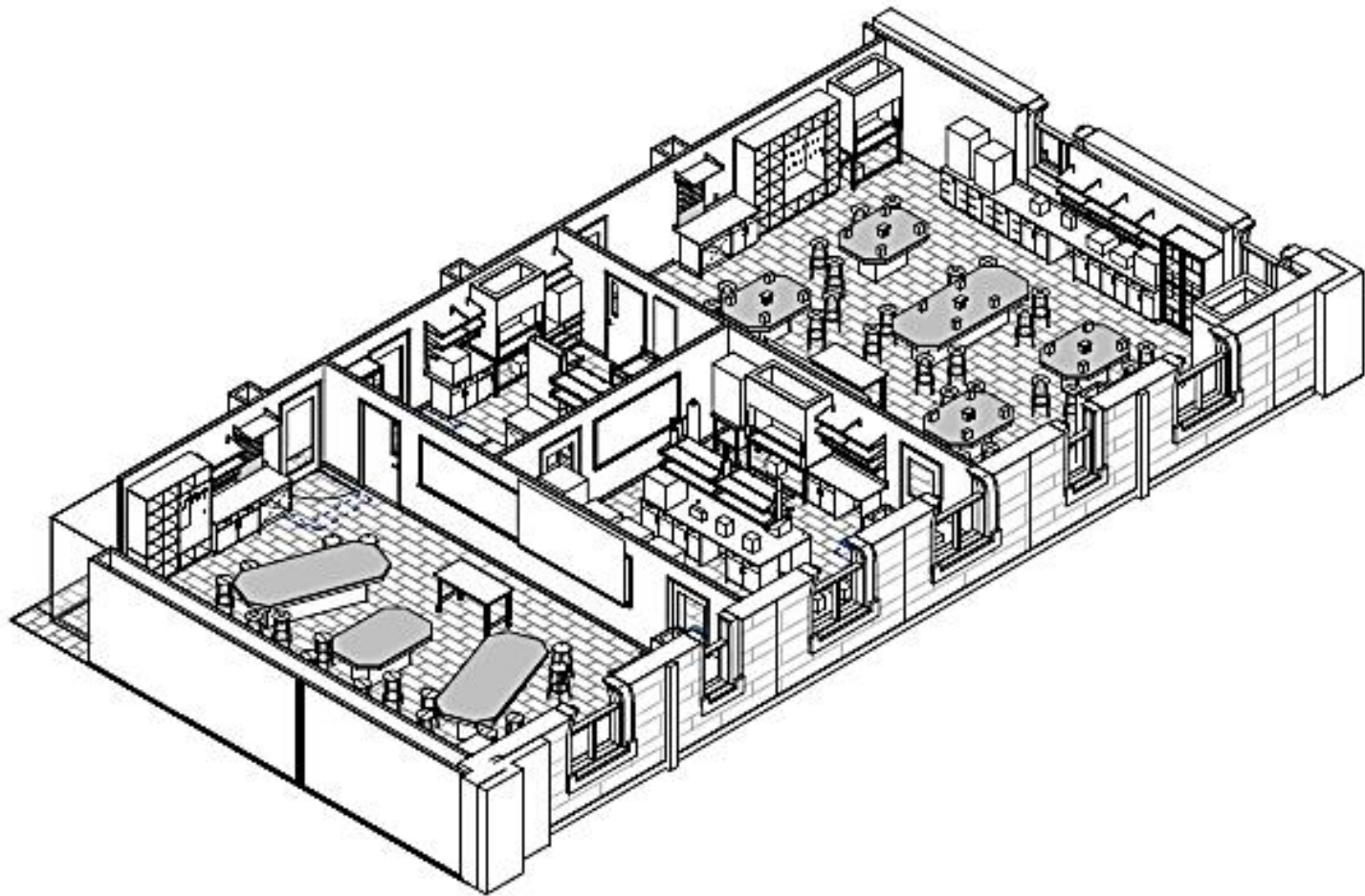
Cellular, Molecular and Microbiology labs are on the lower right-hand side of the illustration with prep spaces in-between.

On the top side of the corridor (facing Main Hall), classrooms can accommodate 48, 36 and 24 students respectively depending on the configurations.





FOURTH FLOOR: CHEMISTRY LABS



FOURTH FLOOR: CELLULAR AND MOLECULAR LABS

The Trinity Academic Center

Project Partners:

Design/Build Team:

General Contractor: Clark Construction

Architect: EYP (Einhorn Yaffee Prescott)

Other Partners:

Project Management: Jones Lang LaSalle

Zoning, Finance and Construction Counsel: Goulston & Storrs PC

Financial Advisor: PFM

Banking Partner: SunTrust

For Additional Information Contact:

President Patricia McGuire, president@trinitydc.edu 202-884-9050
Trinity Washington University, 125 Michigan Avenue, NE, Washington, DC 20017



View from front lawn Main Hall left, Library right

The Trinity Academic Center

Capital Campaign and Naming Opportunities:

Trinity's Second Century Campaign seeks to raise \$30 million in total, including \$25 million to support the Trinity Academic Center and \$5 million for scholarships. Trinity will recognize donors supporting Trinity's Second Century Campaign at these levels:

- | | |
|--------------------------------|-------------|
| • Plaza at Entrance | \$2 million |
| • Interior Entrance and Lounge | \$1 million |
| • Nursing Laboratory Floor | \$1 million |
| • Science Laboratory Floor (2) | \$1 million |
| • Laboratories (12) | \$500,000 |
| • Tiered Classrooms (2) | \$500,000 |
| • Center Classrooms (3) | \$250,000 |
| • Large Classrooms (6) | \$100,000 |
| • Small Classrooms (6) | \$75,000 |
| • Offices and Study Spaces | \$25,000 |